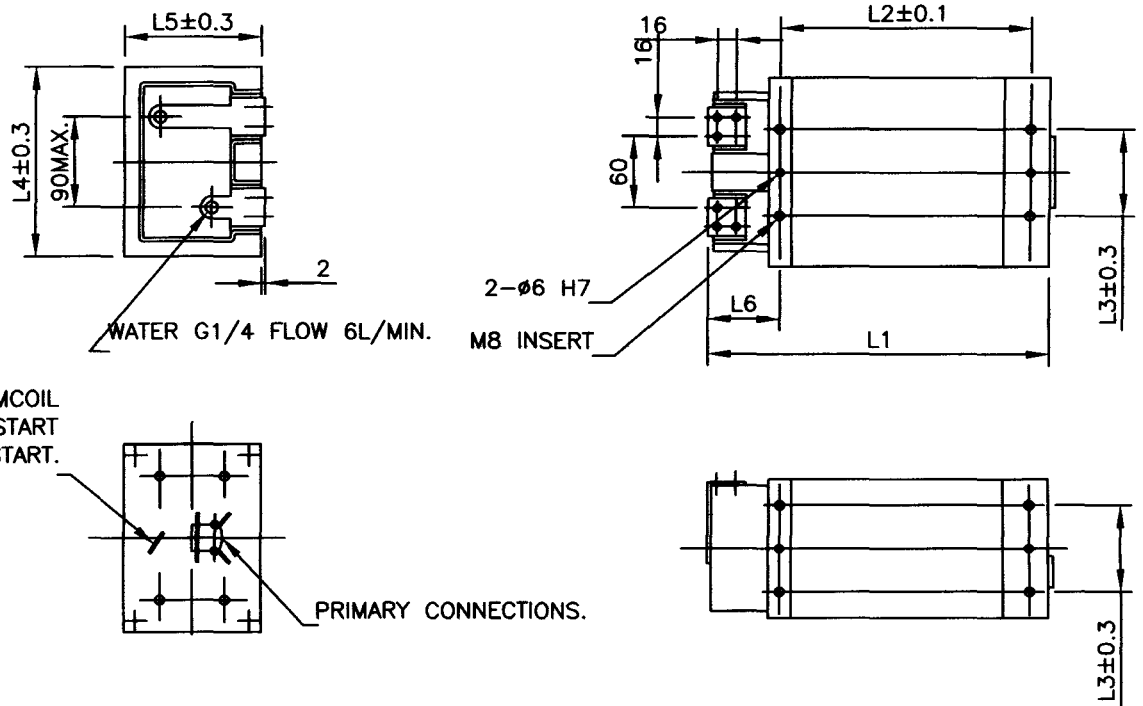


# ISO 10656 WELDING TRANSFORMERS

## 'H' AND 'J' TYPE



Model		4.5-4	5.6-4	6.3-4*	6.3-5.4	7.1-5.4	8.0-5.4	10.0-5.4	13.0-5.4
ISO Type		H	H	H	J	J	J	J	J
S50 @ 50%	KVA	22	32	36	48	54	61	76	100
U <sub>2</sub>	V	4.5	5.6	6.3	6.3	7.1	8	10	13.5
I <sub>2P</sub>	A	4,000	4,000	4,000	5,400	5,400	5,400	5,400	5,400
L <sub>1</sub>	mm	245	260	260	275	285	314	360	455
L <sub>2</sub>	mm	170	170	170	190	190/200	230	275	365
L <sub>3</sub>	mm	70	70	70	90	90	90	90	90
L <sub>4</sub>	mm	150	150	150	160	160	160	160	160
L <sub>5</sub>	mm	106	106	106	125	125	125	125	125
L <sub>6</sub>	mm	58.5	58.5	58.5	58.5	58.5	58.5	58.5	58.5
Mass	kg	20	26	27	29	31	38	48	51
Colour		orange	lilac	blue	blue	green	grey	yellow	brown